

# Product Specification

## Backlighting Injection Module

### 0.36W series



## Areas of application

- Signage and illuminated advertising.
- For 40~100mm depth light boxes and channel letters.
- Permanent outdoor use in enclosed light boxes or channel letters.

## Product features

- Chain of 100 pcs LED modules.
- High efficiency LED.
- High color consistency (MacAdam 4).
- Beam characteristic: 160°.
- Protection class of LED module: IP67.
- Flexible chain can be split between any modules.
- Mounting with screw or pre-mounted double-sided adhesive tape possible.
- Nominal life-time up to 50,000 h (at  $t_c$  50°C).
- Module size:  
19 x 14 x 10 mm.

## Application data

Max connection number	100 pcs
Distance of modules (wire)	120 mm
Ambient temperature $t_a$	-25 ~ +50 °C
Max. temperature on module $t_c$	65 °C
Storage temperature $t_s$	-40 ~ +85 °C
Risk group (EN 62471:2008)	1
Certification list	CE/UL/RoHS

## Technical data

Product Name	Nominal voltage <sup>③</sup>	Color temperature or Wavelength <sup>①②</sup>	CRI <sup>①②</sup>	Typ. Flux per module <sup>①②</sup>	Typ. Power per module <sup>①②</sup>	Luminous efficacy
TL10-W33K-0.36W	12.0 V	2700~3300 K	>70	33.8 lm	0.36 W	94.0 lm/W
TL10-W65K-0.36W	12.0 V	5500~6500 K	>70	35.3 lm	0.36 W	98.0 lm/W
TL10-W170K-0.36W	12.0 V	8000~17000 K	>70	35.3 lm	0.36 W	98.0 lm/W

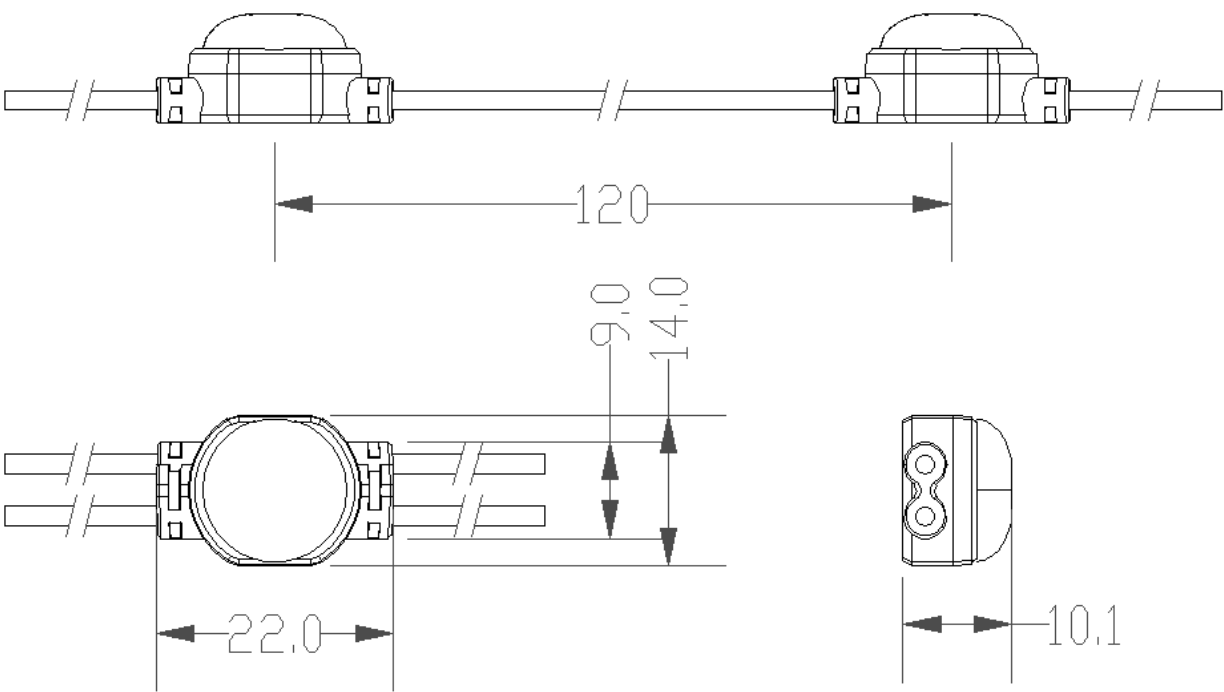
① Tolerance range for optical and electrical data: -15/+15 %.

② All value @  $t_a=25^{\circ}\text{C}$ .

③ Tolerance range for the supply voltage: 12 V:  $\pm 5\%$ .

# Product Specification

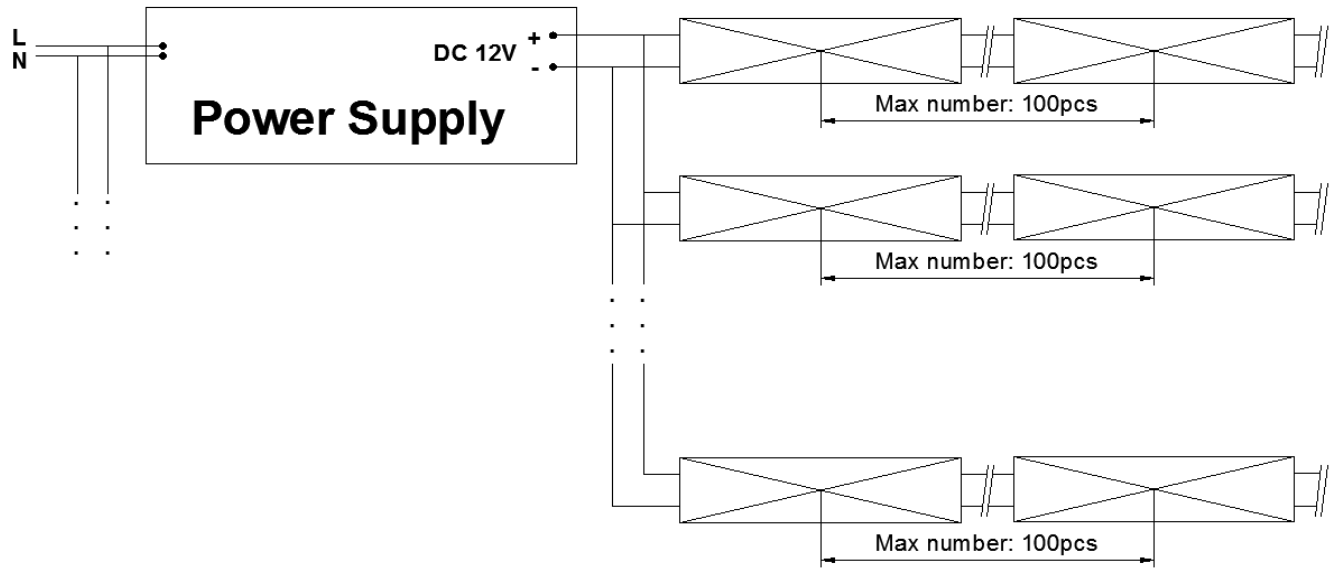
## Product 2D drawing (unit: mm)



## Wiring type

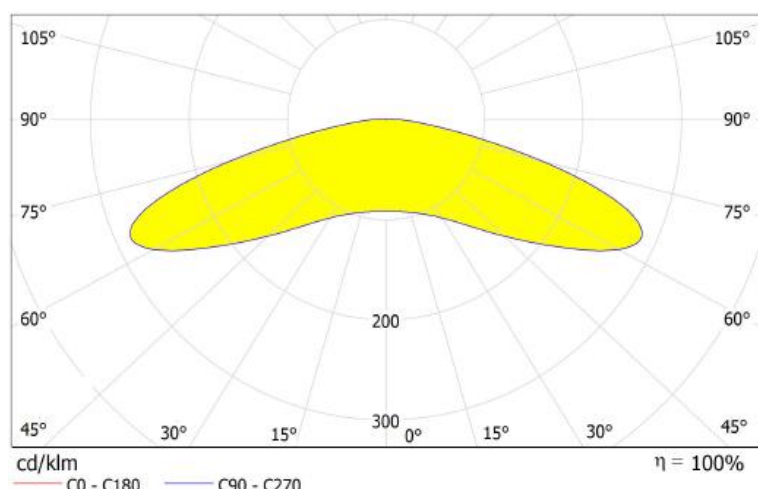
Cable	UL 1007 20AWG	
Color	red - white	white
Function	+	-

Wiring example:



## Light distribution

### Beam characteristics 160°

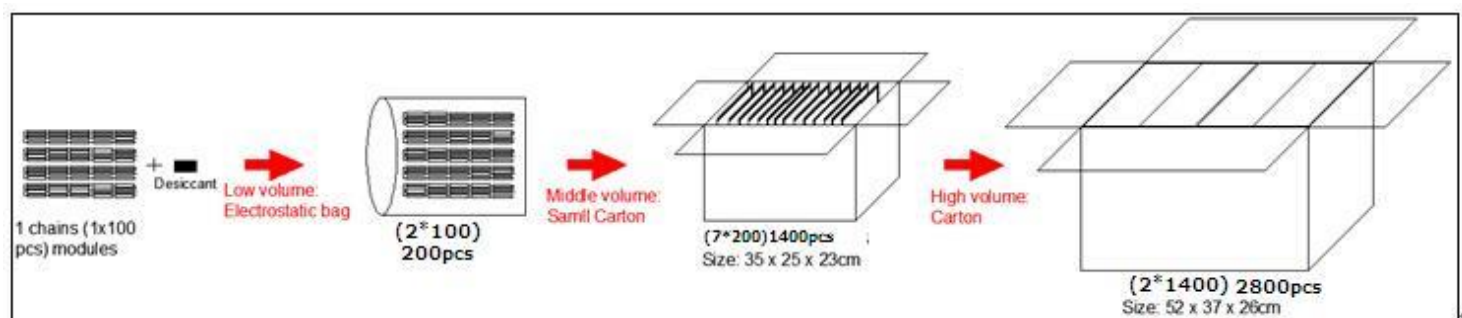


## Packaging information

Product name	Weight per pc.①	Packaging, low volume		Packaging, high volume	
TL10-WXXK-0.36W	4.1 g	200 pc(s).	0.82 kg	2800 pc(s).	13.5 kg

① Tolerance range for weight:  $\pm 10\%$ .

### Packaging example:



## Noted:

- The power cable should meet the actual maximum current and power.
- All the end point of wire should be treated with waterproof;
- Pay attention to the maximum number of connections, prohibit overloading.
- All the power supply must has the corresponding certification.
- Our company reserves the right of final interpretation.
- Subject to change without notice.